

*An exciting new adventure in...*

# FAIRWAY LIVING



*A distinguished new address in...*  
**BILLINGS, MONTANA**

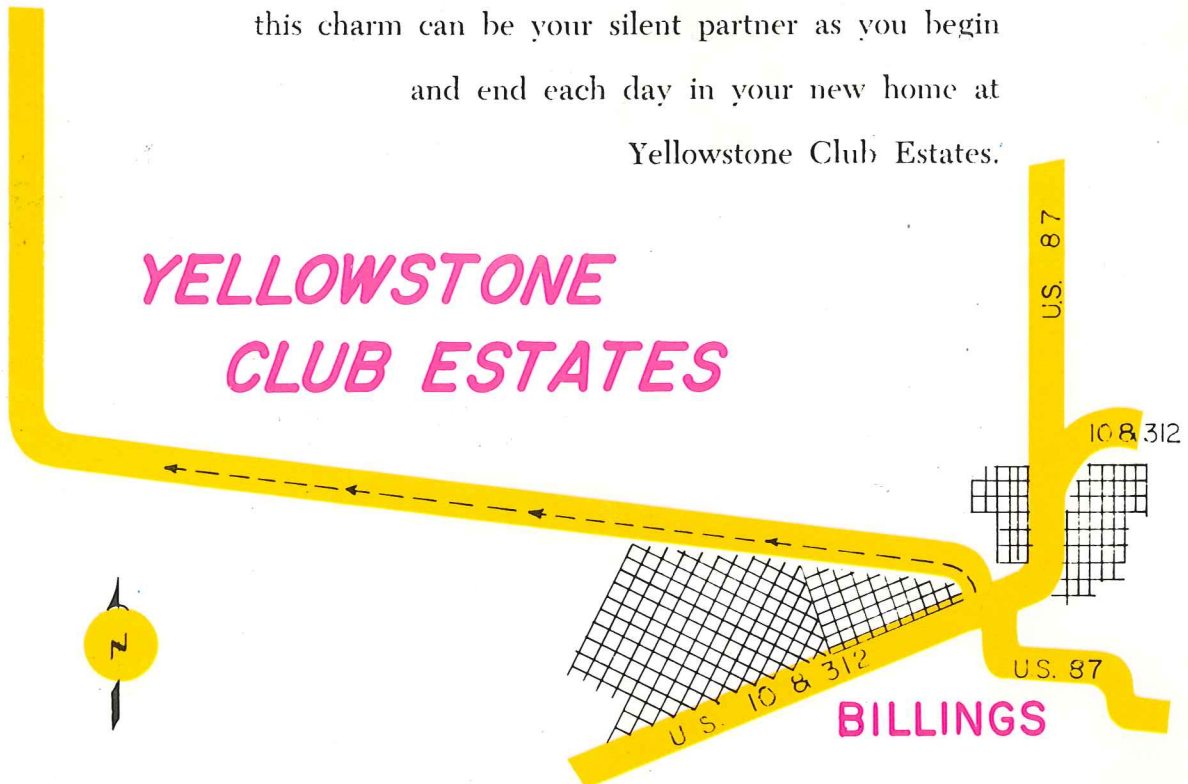


*Exclusive living for particular people...*

*An exclusive residential community designed for suburban living at a relaxed and leisurely pace.*

## **Yellowstone Club Estates**

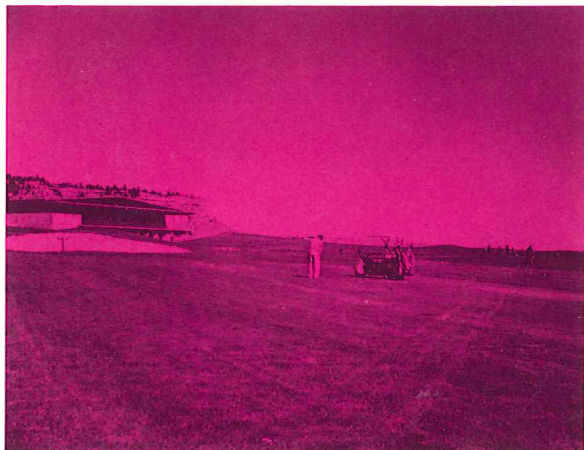
- That which is Montana, is refreshingly evident in the rich hues of the valley contrasted with the soft blend of the sky and mountains. From the first light of morning, as it breaks and fills the valley with welcome, 'til the warm farewell at evening, nature displays a fresh and exhilarating charm . . . this charm can be your silent partner as you begin and end each day in your new home at Yellowstone Club Estates.



● The beautiful Yellowstone Valley, surrounded by a majestic panorama of mountains, captures the heart and eye of all. The fortunate residents of this exciting and beautiful residential community will enjoy clean, clear, quiet suburban living; yet be only minutes from downtown Billings. You are invited to make your home in this spectacular setting.



**Trouble on the Fifteenth**



**Finishing at the Eighteenth**



**Looking east toward Clubhouse with Yellowstone Club estates beyond**





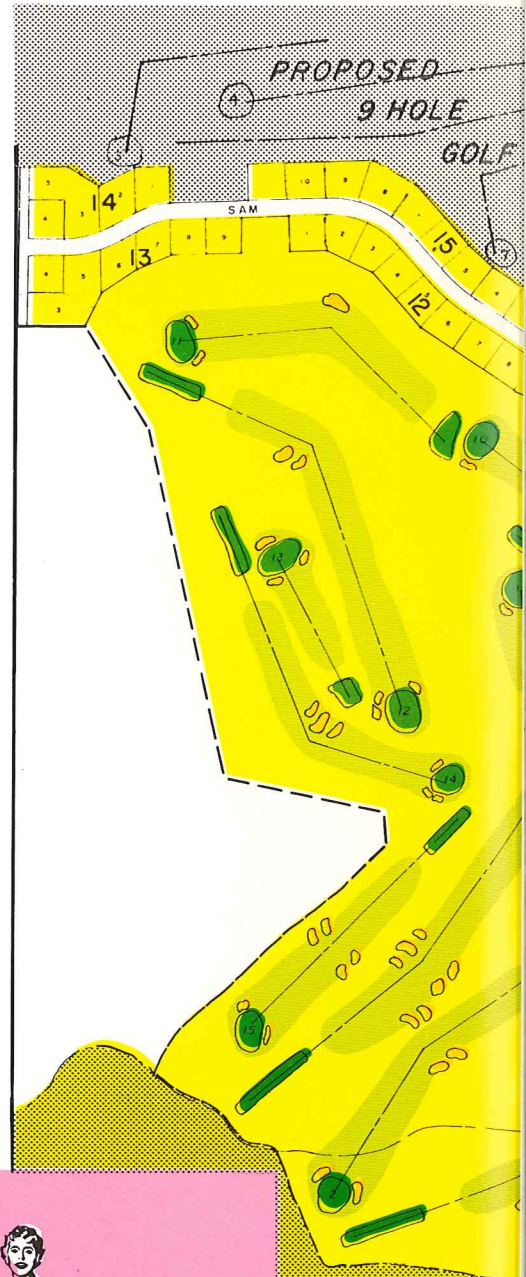
# Yellowstone

# Country Club

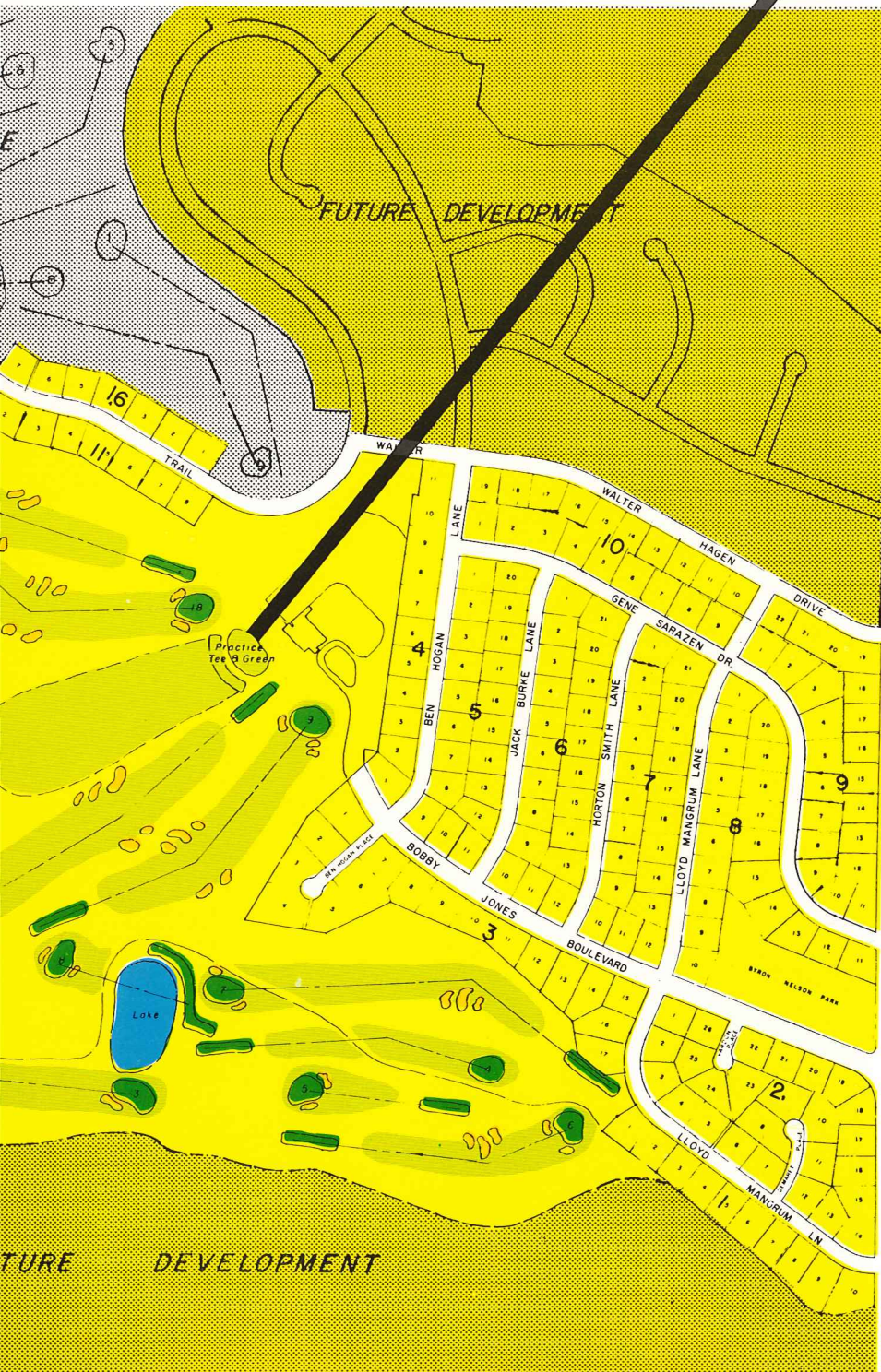


● Harmony of architecture with the natural surroundings, utility in design yet design for its own sake . . . such is the setting of the beautiful Yellowstone Country Club. The designs have captured Montana's motif . . . blue skies and golden grain fields.

*Located on Montana Highway 3, Yellowstone Club Estates is easily accessible by hard-surfaced, all-weather highway.*





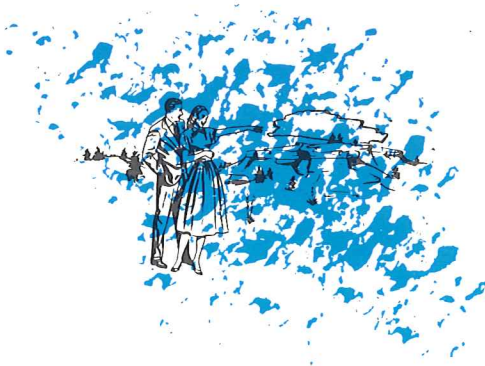
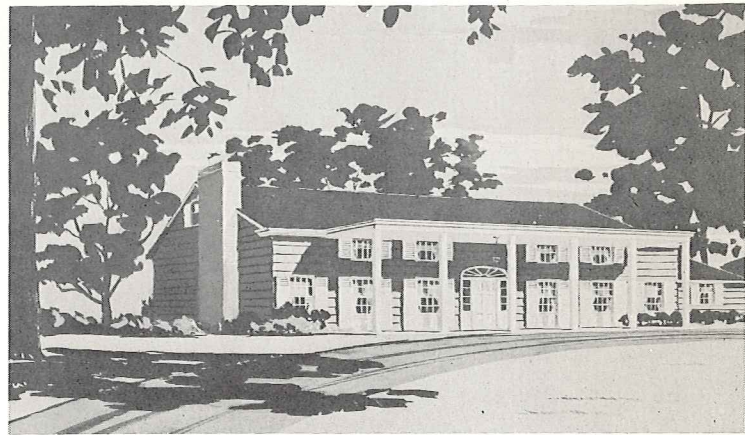


- 18-hole championship golf course, designed by Robert Trent Jones, internationally known golf course architect of New York City, offers the ultimate in golfing. Jones termed this is “one of the outstanding club developments in the west.”



## *House Plans...*

- Illustrated to the right is the proposed new home of Mr. and Mrs. Fred M. Hart, Billings, Montana. This stately and serene home will be far over the minimum 1250 square feet with a plan of 3,000 actual square feet.





## *Property Value...*

- Plan for the future . . . consider the investment potential . . .

With the sloping terrain, each lot will have a wonderful view of the beautiful surroundings and will appreciate in value each year.

The Yellowstone Country Club Estates offers everything for pleasant modern-day living . . .

large lots, varying from

15,000 to 28,000 square feet, with frontage of 105 to 200 feet, beautiful views and Country Club living. Assuredly, real estate near a private Country Club may never again be offered you at these reasonable prices.

Remember . . . you can purchase your future homesite in Yellowstone Club Estates now for as little as \$1,750. Should you desire, excellent terms can be arranged for your convenience.

Although the membership of the Yellowstone Country Club is limited to a set number and all members are screened by the membership committee and approved by the Board of Directors, purchasers of homesites will be given first consideration to join the club.







**Yellowstone Land Company**

SUB-DIVISION OWNERS AND SELLERS

Behner Building

Phone CH 8-6481

BILLINGS, MONTANA